

Start



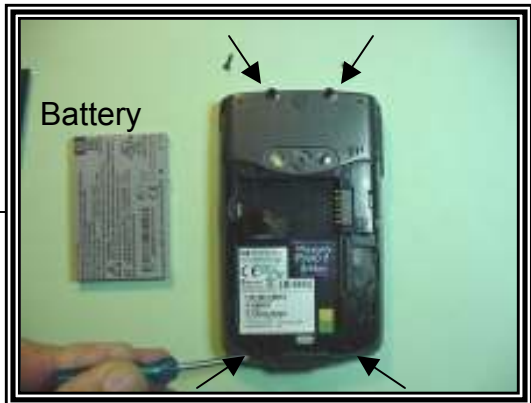
Ipaq 6500 with required tools



Press button at base of unit to release rear cover.



Using pull tab at left edge, lift and remove battery.



Using T6 Torx Driver remove 4 screws as indicated above.



Insert Case opening tool between front bezel and rear cover to release plastic snap detail that holds them together. (Continued on Page 2)



Using Philips Screwdriver, remove single silver colored screw located under "Warranty Void if Broken" label.

**PDA Smart
Cedar Park, Texas**

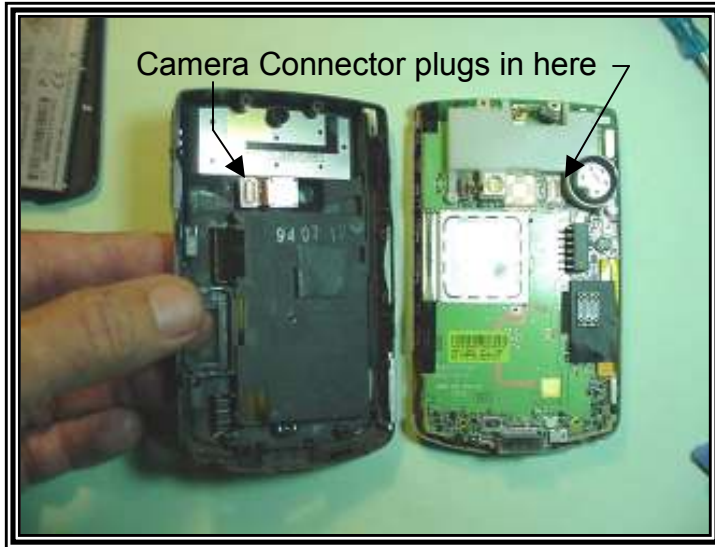
Description:
**Ipaq 6500/6900
Disassembly Instructions**

Date: 10/19/2007
Created By: T Mattox

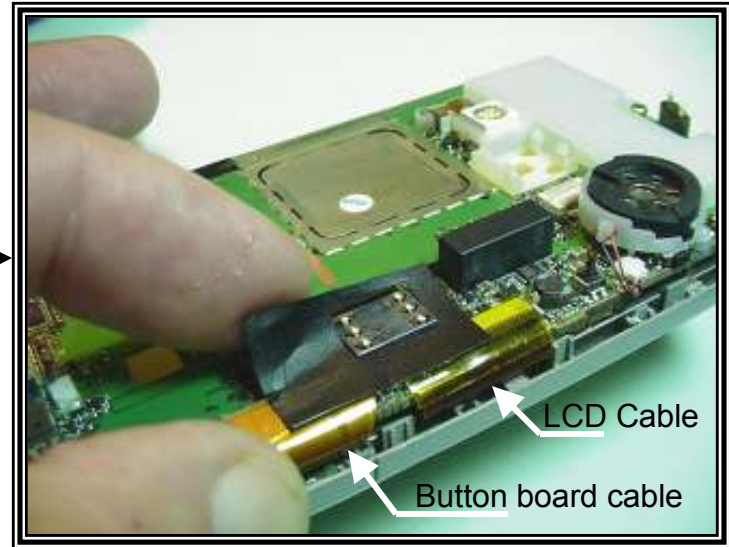
Tools Required: Case opening tool, Tweezers, precision Philips screwdriver, T6 Torx Screwdriver

Note: Antistatic Procedures must be followed when handling all electronics

From Page 1
→

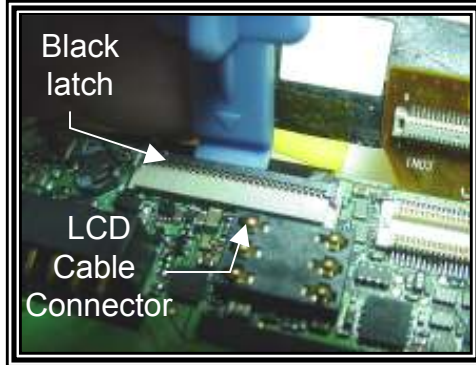


Remove plastic rear cover after plastic snaps have been released. Please note camera connector that must be plugged in upon reassembly.

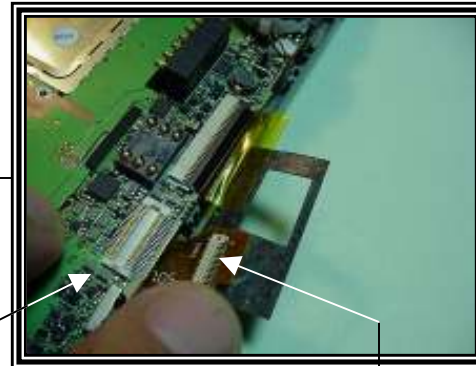


Lift edge of black tape that secures LCD and button board ribbon cables to motherboard.

Peel back tape to unplug button board ribbon cable from its mating connector on the motherboard



Using case tool lift edge of LCD connector latch to release LCD cable. (continued on Page 3)



Button Board Cable unplugged from motherboard connector

Tools Required: Case opening tool, Tweezers, precision Philips screwdriver, T6 Torx Screwdriver

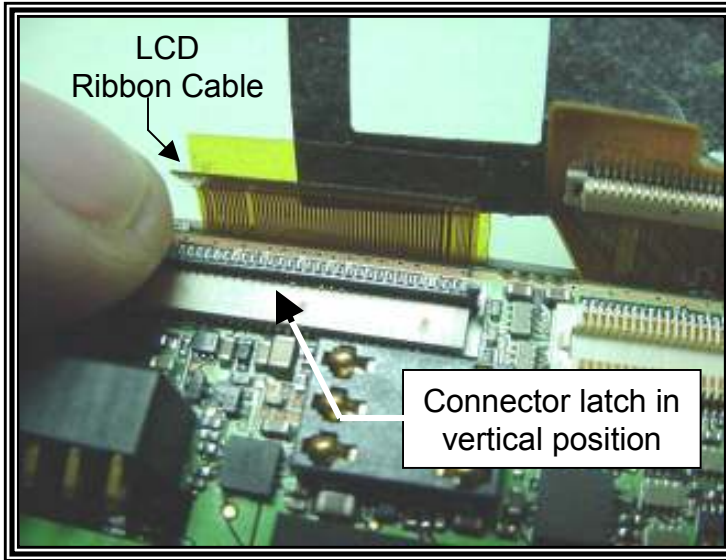
Note: Antistatic Procedures must be followed when handling all electronics

**PDA Smart
Cedar Park, Texas**

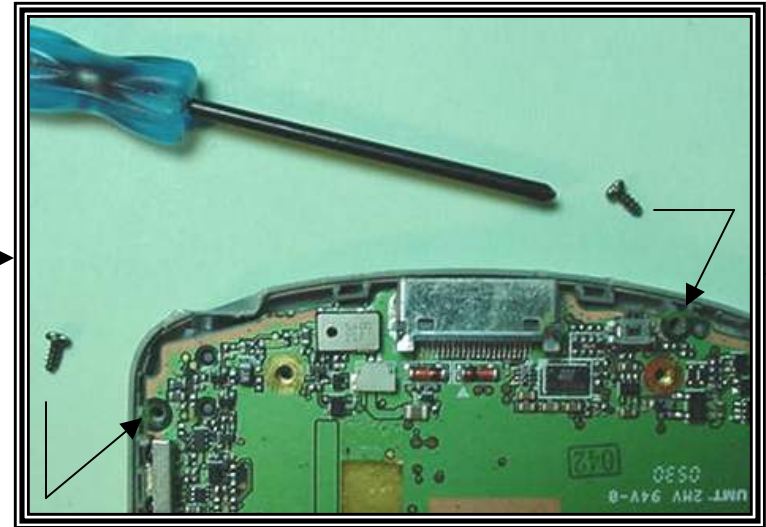
Description:
**Ipaq 6500/6900
Disassembly Instructions**

Date: 10/19/2007
Created By: T Mattox

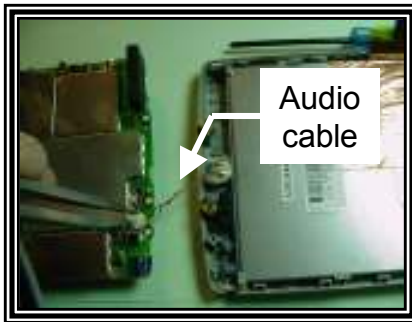
From Page 2



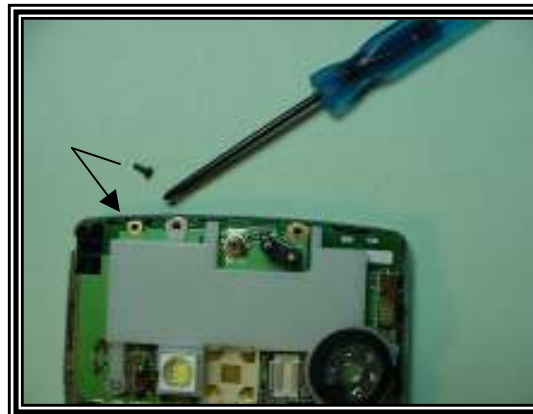
With latch rotated to vertical position, pull LCD cable from motherboard connector.



Remove 2 Philips screws from locations near the bottom end of the unit as indicated above



Carefully lift the motherboard from the front bezel plastics, noting that there is an audio cable that must be unplugged from the motherboard with tweezers. (Continued on Page 4)



Remove a single Philips screw from a location indicated at left that is near the top end of The unit.

Tools Required: Case opening tool, Tweezers, precision Philips screwdriver, T6 Torx Screwdriver

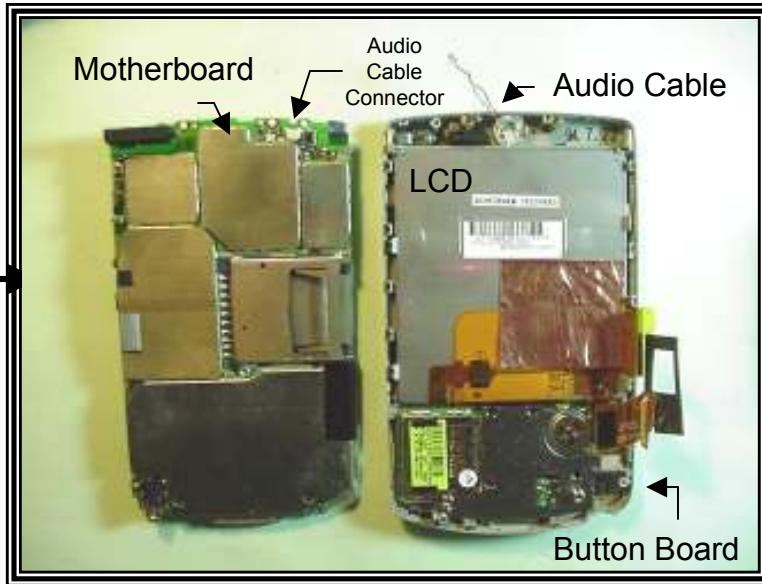
Note: Antistatic Procedures must be followed when handling all electronics

**PDA Smart
Cedar Park, Texas**

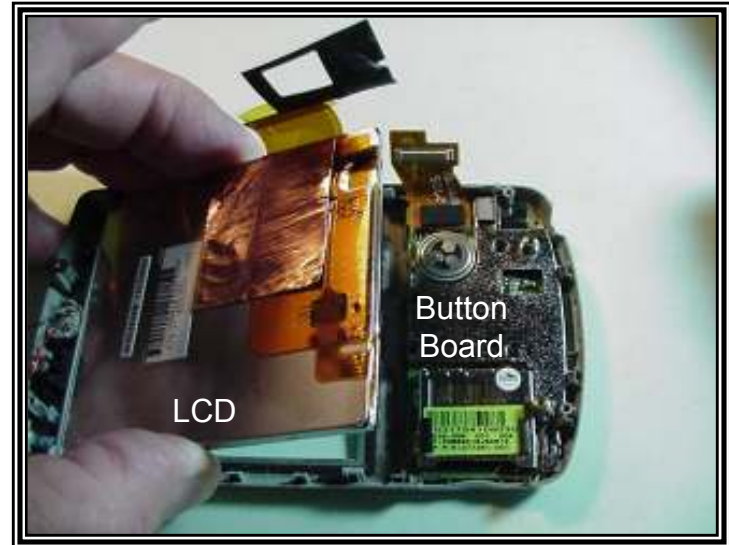
Description:
**Ipaq 6500/6900
Disassembly Instructions**

Date: 10/19/2007
Created By: T Mattox

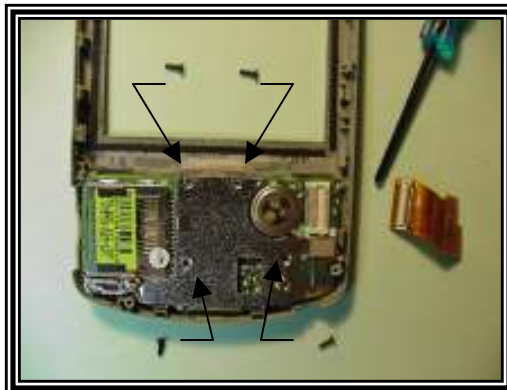
From
Page
3



Separate the Motherboard from the Front Bezel.



Lift the LCD assembly from the plastic snap detail holding it into the front plastic bezel.



Unplug the button board cable and remove 4 Philips screws holding the button board into the front bezel
(Continued on Page 5)



LCD removed from front bezel

Note: Antistatic Procedures must be followed when handling all electronics

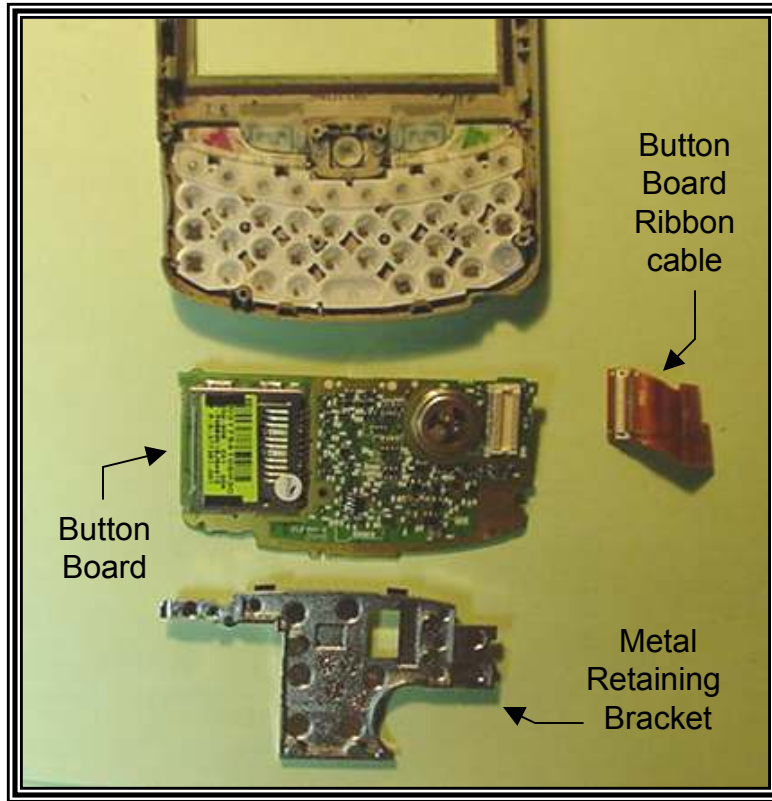
Tools Required: Case opening tool, Tweezers, precision Philips screwdriver, T6 Torx Screwdriver

**PDA Smart
Cedar Park, Texas**

Description:
**Ipaq 6500/6900
Disassembly Instructions**

Date: 10/19/2007
Created By: T Mattox

From Page 4



Assembly is the reverse of this process.

END

Lift the metal retaining bracket from the back of the button board. Lift the button board from the front Bezel.

Tools Required: Case opening tool, Tweezers, precision Philips screwdriver, T6 Torx Screwdriver

Note: Antistatic Procedures must be followed when handling all electronics

**PDA Smart
Cedar Park, Texas**

Description:
**Ipaq 6500/6900
Disassembly Instructions**

Date: 10/19/2007
Created By: T Mattox